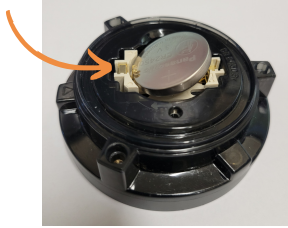


VIB-NANO QUICK STEPS



Insert battery

Use a CR2450 coin-cell battery, making sure you slide the positive terminal under the two pronged connection tabs.



Installation

Install at least 2 sensors with good coupling to solid rock. You can use a masonry bolt or the mounting plate.



Check status

In the scan for devices screen it will notify you which devices are set and in what mode. Do not connect to the device as this will end the session.

For further queries get in touch:
info@shottrack.com.au

SHOTTRACK

STEP
01

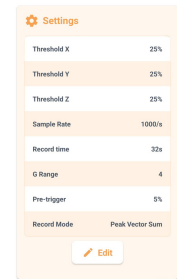
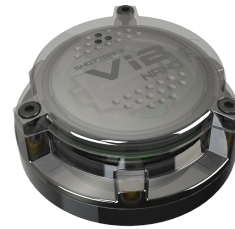
STEP
02

STEP
03

STEP
04

STEP
05

STEP
06



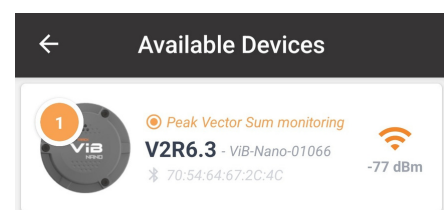
Check Settings

Open the ShockAi App, scan for devices. Choose your device, check the settings are what you require, adjust if needed and press update.



Starting the session

Once the Nano is mounted navigate to the device in the App and press the record button.



Collect device

After the shot, in the scan for device screen a number will indicate how many events were captured, you must connect to the device to end the session before removing the unit.